

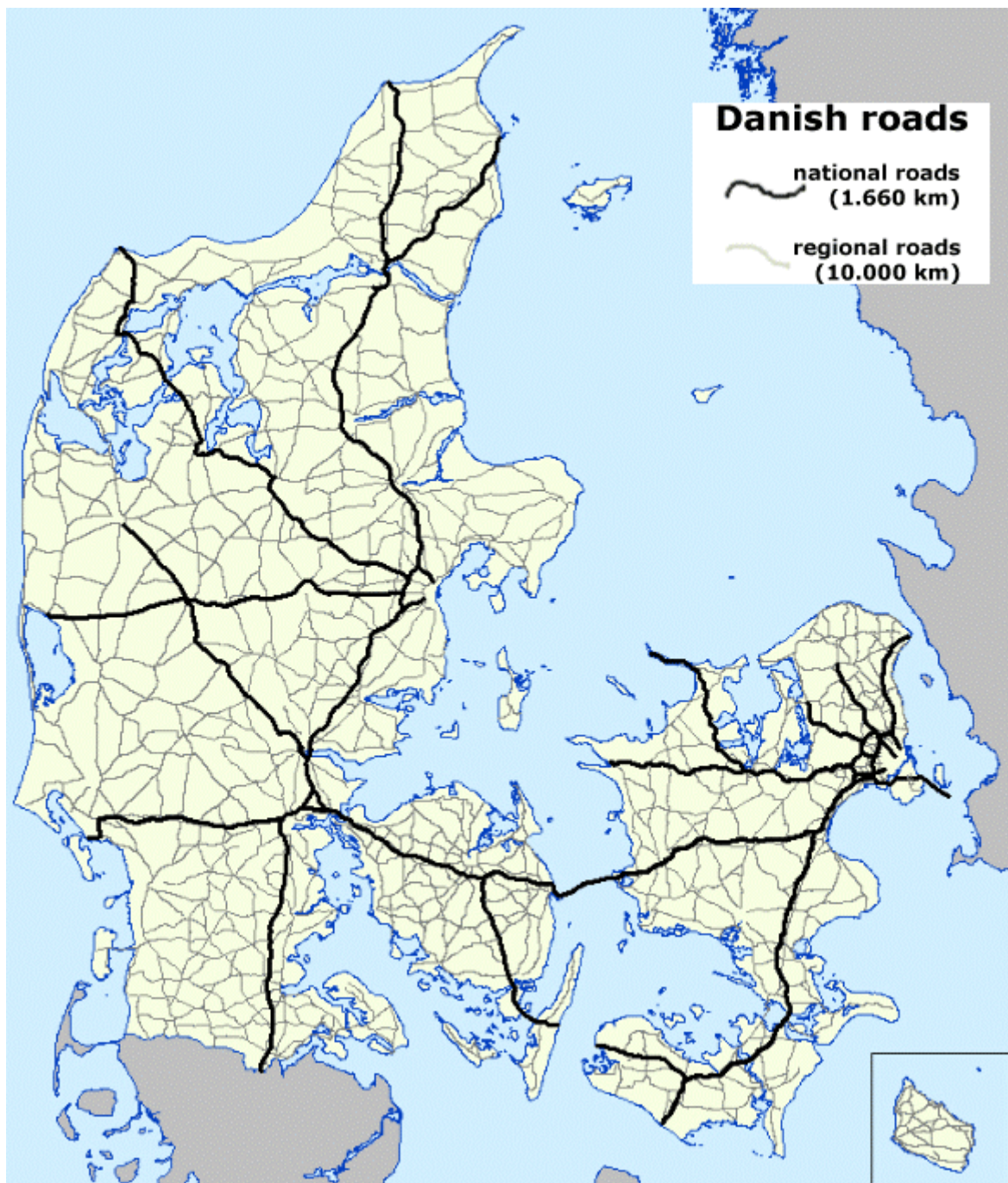
Denmark

Denmark consists of the peninsula of Jutland and approximately 406 islands, of which around 80 are inhabited. Denmark's total land area is 43,094 square kilometres. Of the islands, Zealand is the largest and most densely populated, followed by Funen and the North Jutland island. Denmark's capital, Copenhagen, is located on Zealand. Denmark has approximately 5.3 million inhabitants, and the gross national product per citizen in 2001 was \$30,143.

The Danish Road Network

Danish roads have a total length of around 90 000 km, of which approximately 72 000 km are public roads, while the rest are privately owned. The Road Directorate plays a role in each of the three administrative levels of road operation:

- 60 000 km are local roads, operated by 271 municipalities.
- 10 000 km are country roads, operated by 13 counties.
- 1 700 km are national roads, operated by the Road Directorate



copyright: [Kort & Matrikelstyrelsen, Ministry of the Environment](#)

National roads, which are operated by the Road Directorate and Sound and Belt Holding Limited, have a length of 1 660 km and take up 2% of the total public road network in Denmark. 27% of all the Danish road traffic takes place on the national roads.

Among the 1 660 km roads, there are 918 km motorways, 150 km expressways and 512 km other national roads. Construction works on the national road network include 1 350 bridges and tunnels.

Motorway sections on the Great Belt Bridge and the Sound Bridge, as well as the Sound Motorway, are operated by the Sound and Belt Holding Limited, together making a total of 41 km.

The Danish Road Directorate

Road Administration

The Danish public road network has a total of around 70 000 km. The public road network is divided into national roads (major roads), regional roads (country roads) and local, municipality roads.

- The local roads are operated by municipalities with a total of around 60 000 km, taking up about 84% of the public road network.
- The regional roads are operated by counties with a total of around 10 000 km, taking up about 14% of the public road network.
- The national roads are operated by the Road Directorate with a total of around 1 600 km, taking up about 2% of the public road network.
- Great Belt Bridge, Sound Bridge and the Sound Motorway are operated by Sound & Belt Holding Limited, together making a total of around 40 km.

Road Directorate

The Danish Road Directorate forms part of the Ministry of Transport and employs around 440 people.

The Road Directorate's task - together with the other players in the road and transport sectors - regional and local authorities, traffic companies, organisations and industries - is to ensure and promote knowledge on the function of road transport and its development. This knowledge underpins controlled and targeted efforts towards sustainable road and transport development. The interconnection between road transport and the other transport modes, rail, sea and air, is crucial to our endeavors towards creating sustainable development.

Our insight into road transport conditions benefits Danish society by providing a coherent and well-functioning infrastructure adapted to the citizens' and road users' requirements on reliability, safety, service, the environment, aesthetics and cost.

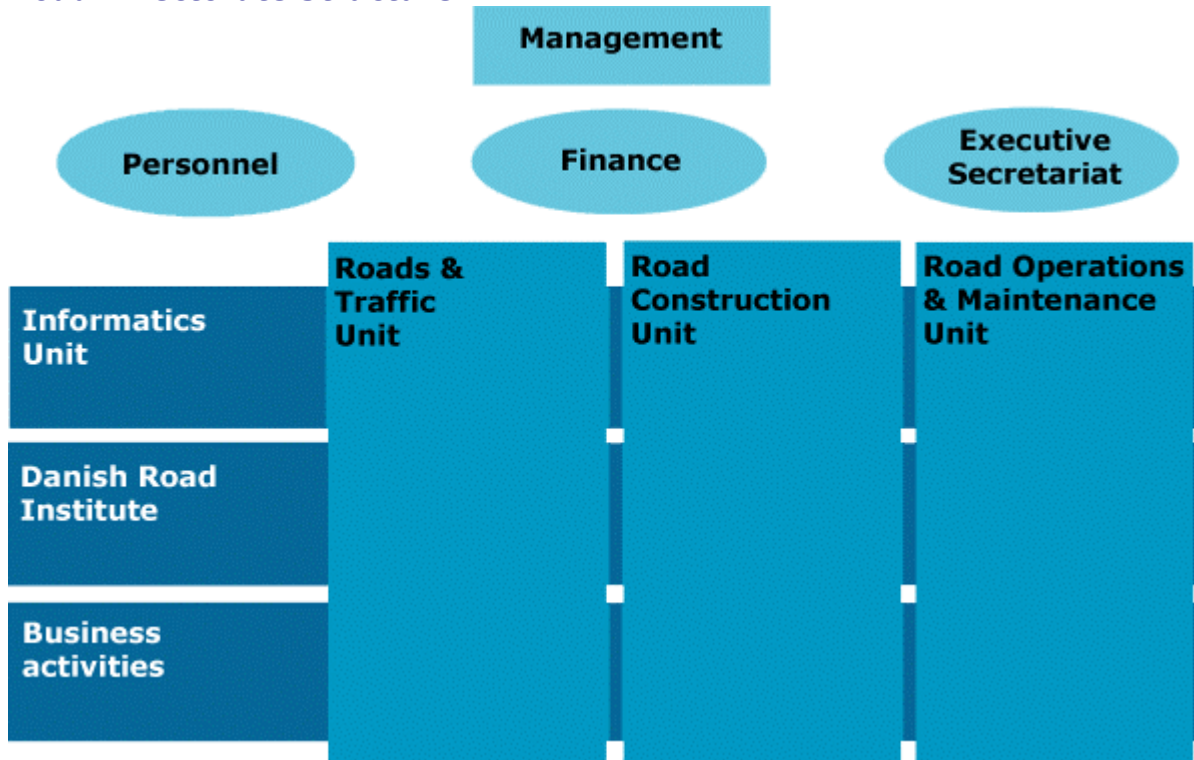
National roads carry 27% of the total transport volume, i.e. general through-traffic between regions, significant ports and border crossings.

Through planning, construction, operation, service and maintenance, the Road Directorate exerts a direct influence on this essential element of the Danish transport scene. Local and regional authorities manage the other approximately 70 000 km of roads, applying tools developed by or in cooperation with the Road Directorate. This calls for cross-sector cooperation in a wide range of areas.

OutSourcing

The Road Directorate (and other road authorities) generally outsource all construction work.

Road Directorate Structure



Roads and Road Traffic

On the Danish road network, which is 90 000 km in total, 84% of the total national goods transport and 92% of the total passenger transport are carried out.

Road transport is thus the dominant transport form in Denmark, and the administration of the road network carries great importance to the national and international transport.



Automobile Stock

At March 2003, vehicle numbers were as follows:

- Personal vehicles: 1 885 773
- Trucks and heavy vehicles: 36 550
- Delivery van: 355 352 (March 2003)

Road Policy

Distribution by road length, traffic volume and road budget among the three road administrative levels

	Road Directorate (and the Sound and Belt Holding Limited)	Counties	Municipalities	Total
Road Length	1.660 km	10 025 km	60.335 km	72.020 km
Traffic volume	12.7 bill. vehicle km	15.3 bill. vehicle km	19.2 bill. vehicle km	47.2 bill. vehicle km
Road budget	2.0 bill. DKK ~308.875.530 \$	2.4 bill. DKK ~370.650 000 \$	6.7 bill. DKK ~1.034.733.000 \$	11.1 bill. DKK ~1.714.259.000 \$

Environment



Environmental considerations are carried out as an important aspect of the Road Directorate's tasks in all phases from planning of construction work to operation and maintenance. Especially in connection with new construction, there is heavy focus on the expected environmental impact of the construction.

Since the mid 1990s, EIA (Environmental Impact Assessment) has been the central part of the planning and design of bigger infrastructure projects in Denmark.

Road Safety



Approximately 450 people are killed (2002: 459) (2001: 431) and 9000 injured (2002: 8820) (2001: 8456) every year on Danish roads. The main objective for traffic safety in Denmark is to reduce the number of fatal accidents and accidents with severely injured by at least 40% by the year 2012 compared to the year 1998.

The action plan "Each Accident Is One Too Many" encourages municipalities and counties to focus on traffic safety work, including elaborating the local action plans for traffic safety.

Together with the rest of the road sector, the Road Directorate contributes to collecting and analysing accident information from the entire road network.

Further Information

More information on any aspect of the Danish road network can be obtained by contacting the Danish Road Directorate:

Road Directorate, Ministry of Transport – Denmark
Niels Juels Gade 13
P.O. Box 9018
DK-1022 Copenhagen K
Denmark

Email: vd@vd.dk
Phone: +45 3341 3333
Fax: +45 3315 6335

Websites of interest

- www.vd.dk (Information on the Danish Road Directorate)
- [english publications](#)
- www.trafikken.dk (traffic information)
- www.vejsektoren.dk (web portal for professionals in the road sector)