

Finland



Finnish Road Administration

The Finnish Road Administration is responsible for the public road network in Finland. Its mission is to provide smooth, safe and environmentally friendly road connections to satisfy the transport needs of citizens and business life. Finnra is one of the agencies of the Ministry of Transport and Communications, and it is in charge of official and administrative tasks in the field of road management. In addition to this main responsibility, Finnra also works in co-operation with all the other parties and organisations to develop the whole transport system for society's best.

Some brief facts

The asset value of national road network is approximately 15 billion euros.
Finnra's staff is about 1 000 employees.
Funding is about 700 million euros/year.
Public roads serve 65 % of all road traffic in Finland.

Finland

Population

5.1 million with about 15 inhabitants per sq. km

Total area

338,145 sq. km

GNP (1998)

21 300 euros (23 000 USD) per inhabitant

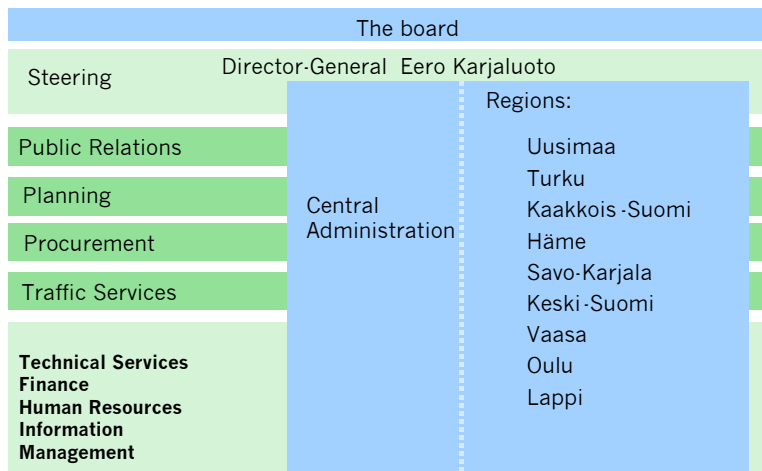
Road network

The total length of Finland's road network is 384 000 km, which includes

- Public Roads ~78 000 km of which ~51 000 km is paved
 - main roads ~13 300 km
 - motorways ~600 km
 - pedestrian and bicycle ways ~4 400 km
 - bridges ~14 000 pcs.
- Streets 26 000 km
- Other roads (includes private roads, forest truck roads), 280 000 km



Organisation



The Finnish Road Administration supervises planning, construction and maintenance of the Finnish public road network as well as draws up investment plans in this respect. Finnra's tasks also include the promotion of a well-functioning market in the field. Finland is divided into nine road management Regions, carrying out the agency's duties locally.

Finnra commissions all road management products and services through competitive bidding. It specifies quality criteria for the work and supervises compliance with them. Competition will be phased-in gradually by 2005:

- Construction and upkeep are entirely subject to competition since the beginning of year 2003
- Maintenance and planning will introduce competition gradually by the end of 2004
- During the transition period, some services are purchased as negotiated contracts from the Finnish Road Enterprise

Road traffic performance in Finland

Finnish people make an average of 2,8 trips a day and use 83 minutes to do so. The distance travelled per day is 45 kilometres per person (Passenger traffic study, 1998-99). 93 % of passenger traffic and 66 % of goods transport takes place on the roadways. Finland has 2.5 million automobiles which includes 2.1 million passenger cars.

Domestic transport statistics

Goods transport
40.5 billion ton-km

Rail	24,5 %
Water	7,4%
Roads	68,1%

Passenger traffic
70.4 billion passenger-km

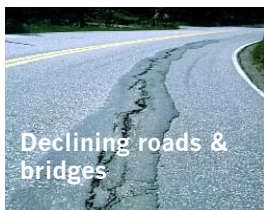
Roads	93,2%
Air	1,9%
Rail	4,7%
Ship & ferry	0,2%

Road policy

The main road policy objectives of Finnra are

- Socio-economic efficiency
- Operational requirements of business life
- Regional and social equality
- Road safety
- Environment

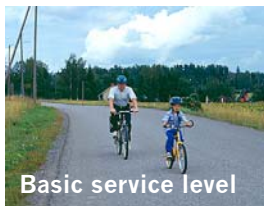
The most important challenges for Finnra



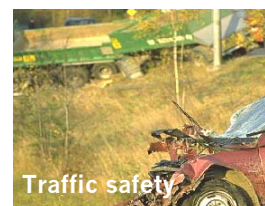
to preserve asset value of roads and bridges



to invest for fluent traffic flow on major urban areas



to provide basic level of service on rural areas



to channel more emphasis to traffic safety

The values of the Finnish Road Administration

Societal responsibility

The Finnish Road Administration has a responsibility towards the viability of the entire Finnish transport system. In its activities, the agency takes account of socio-economic efficiency, operational requirements of business life, regional and social equality, traffic safety and the environment.

Customer-oriented activities

Awareness of road-user needs and acquisition of up-to-date information on these requirements are important facets of the work done by the Finnish Road Administration. The Road Administration develops its activities and services to meet the needs of road users.

Know-how

An understanding of the importance of traffic conditions for the welfare of citizens and for competitiveness in business life is pivotal to the agency's know-how. The Finnish Road Administration is also an expert on technical questions of road management. This know-how is deepened in association with the scientific community and other partners.

Co-operation

The development of the transport system in its entirety calls for close co-operation between a wide range of actors. This collaboration is based on mutual trust and constant dialogue. The Finnish Road Administration has the initiative in promoting co-operation in its core areas of expertise.

Contacts

Finnish Road Administration
P.O.Box 33
00521 Helsinki
Finland

Tel. +358 204 22 11
Fax +358 204 22 2202
info@tiehallinto.fi
www.tiehallinto.fi

<http://www.tiehallinto.fi/eindex.htm> (English pages)
<http://www.tiehallinto.fi/thtieto/f03en.pdf> (Road Facts 2003 –publication in English)