

Japan

Road Bureau,
Ministry of Land, Infrastructure
and Transport



Road Bureau, Ministry of Land, Infrastructure and Transport

Road Bureau is one of the agencies of the Ministry of Land, Infrastructure and Transport. The main responsibilities of Road Bureau are as follows.

- **Creating Trunk Road Networks**

Road Bureau works on the planning and construction of trunk road networks, including Arterial High-Standard Highways, as a foundation for 21st century economy and society.

- **Laying the Foundation of IT Society**

To lay the foundation of an information-age society, fiber optic cable networks for road maintenance and spaces for housing fiber optic cables put in place. The bureau is also working for the development and implementation of an Intelligent Transport Systems (ITS).

- **Renewing and Recreating Cities**

To create safe and desirable urban environments and renew/restructure cities by eliminating traffic congestion, various Traffic Demand Management (TDM) measures are implemented.

- **Building a Barrier-free Society**

To prepare for the declining birth rate and graying population and secure safe living and travel environments by providing adequate spaces for pedestrians and bicycles.

- **Facilitating Intermodal Transportation**

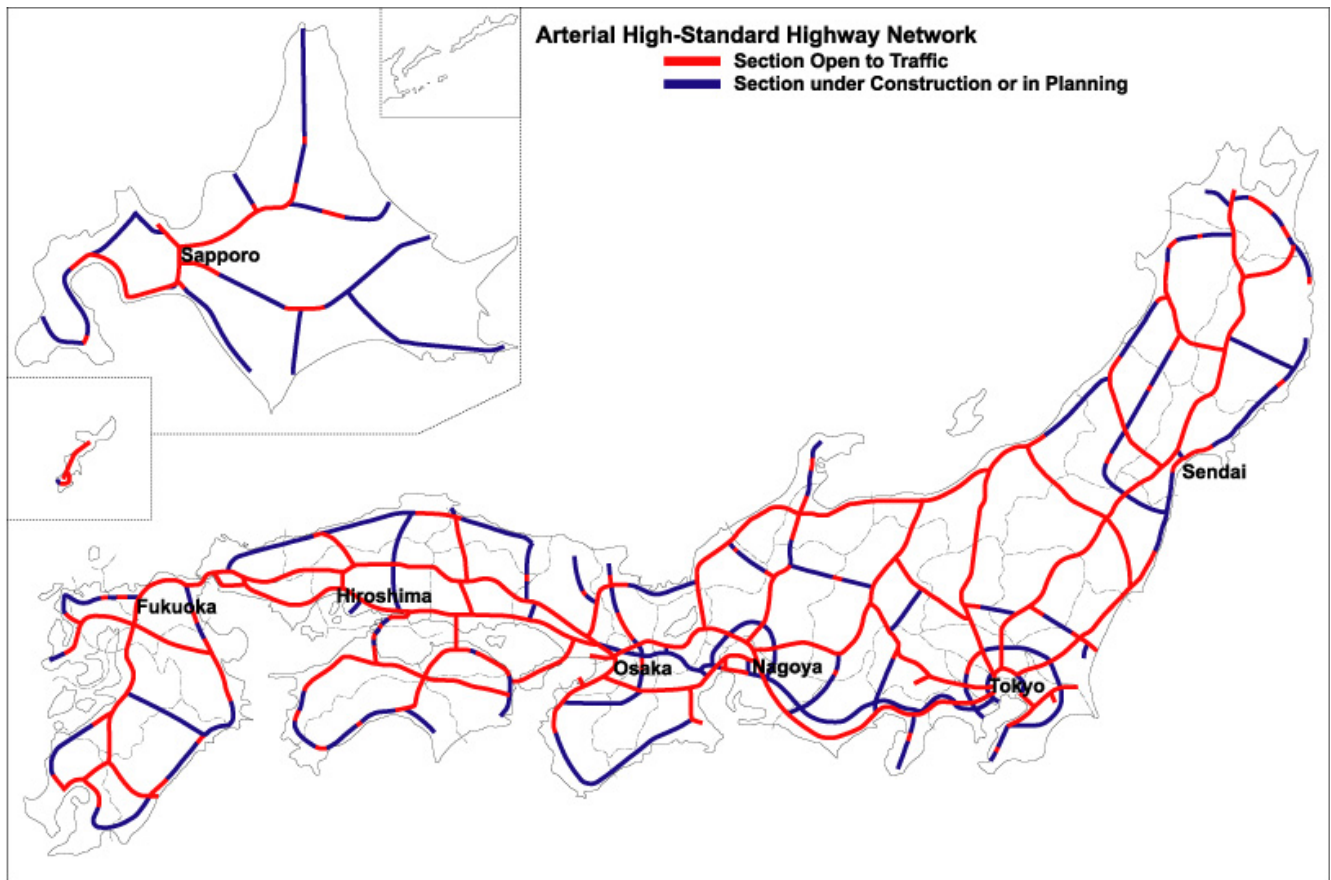
Transportation nodes will be improved through measures such as the construction of roads directly linked to airports and seaports and the provision of passageways through rail station plazas and subway stations.

Road Network of Japan

Roads in Japan consist of 7,000 km of Expressways and approximately 1,200,000 km of general roads.

National Expressways	6,851 km
National Highways	53,866 km
Prefectural roads	128,409 km
Municipal roads	982,521 km
Total	1,171,647 km
(April 1, 2001)	

The total length of the Arterial High-Standard Highways in service reached the 8,017 km mark as of the end of fiscal year 2001. This is about 57 % of the total planned length of 14,000 km.



Background Information on Japan

Population (2001)

127.3 million, with about 341 inhabitants per sq. km.

Total area

377,880 sq. km.

Capital

Tokyo

GNP (2001)

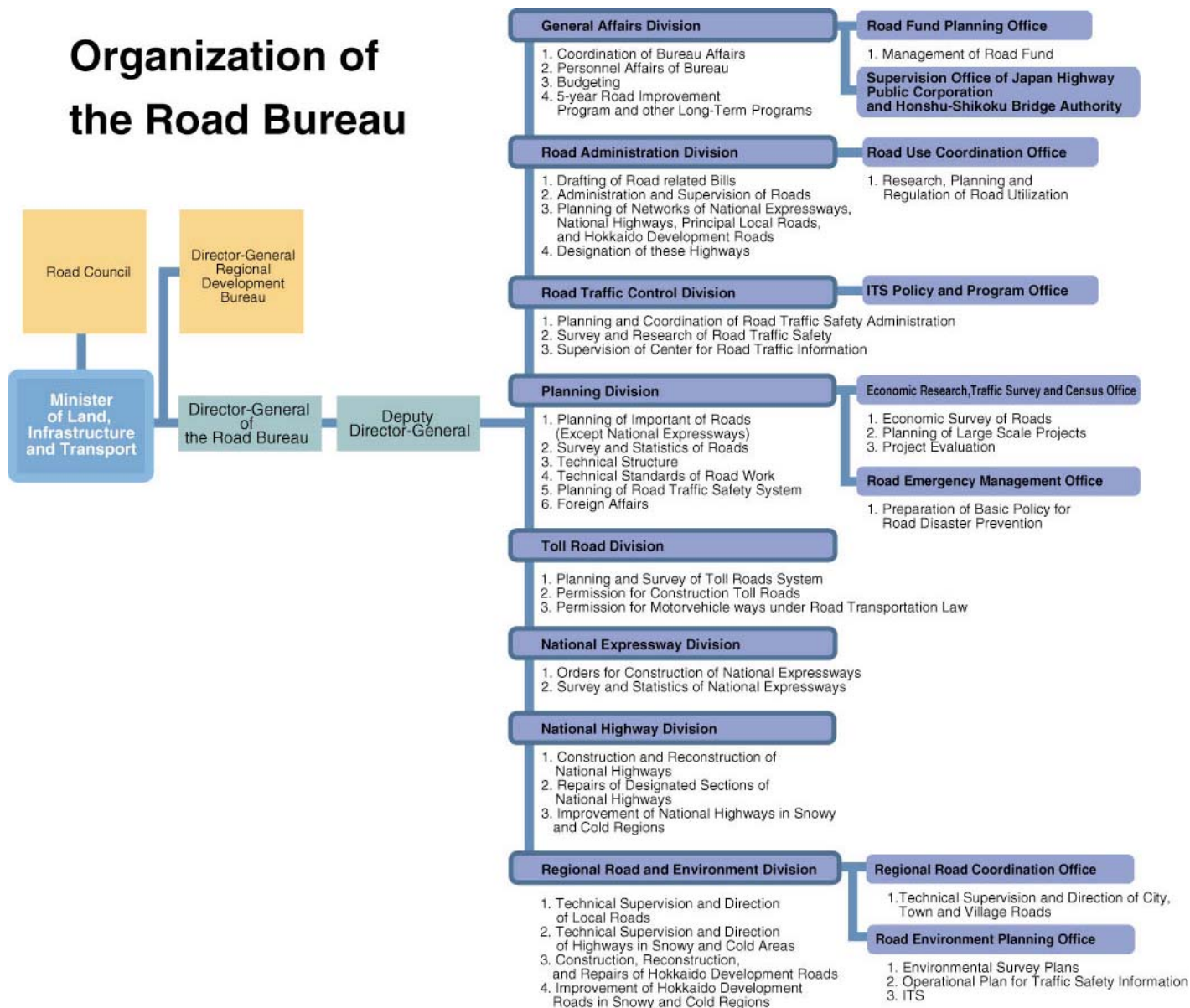
507,455 billion yen (4,175,728 million USD)

Japan Highway Public Corporation

Japan Highway Public Corporation (JH) is a public corporation founded in 1956 and fully owned by the national government based on the Japan Highway Public Corporation Law. As its main task, it is committed to the construction and operation of toll highways nationwide, including expressways.

JH has constructed 7,200 km of expressways, and is now constructing 2,100 km nationwide. JH has also constructed and is operating 900 km of other toll highways, and 300 km more are currently under construction (as of the end of March 2003). Furthermore, JH provides and operates highway-related facilities such as information facilities and communication systems. After the opening of toll highway, JH also undertakes maintenance work, traffic operation work, and toll collection work. As a toll collection method, ETC (Electronic Toll Collection System) service is being deployed nationwide.

Organization of the Road Bureau



Road traffic performance

Registered Motor Vehicle

(vehicles)	
Passenger Cars	53,487,293
Buses	234,244
Freight Vehicles	19,345,415
Total	73,066,952
(March 31, 2002)	

Volume of Freight Traffic

(million ton-km)	
Automobile	313,118 (54.2%)
Railway	22,136 (3.8%)
Coastal Shipping	241,671 (41.8%)
Airline	1,075 (0.2%)
Total	578,000 (100%)
(FY 2000)	

Volume of Passenger Traffic (million passenger-km) (FY 2000)	
Automobile	951,253 (67.0%)
Railway	384,441 (27.1%)
Ferry	4,304 (0.3%)
Airline	79,698 (5.6%)
Total	1,419,696 (100%)

Volume of Road Traffic (million vehicle-km) (FY 2000)	
Passenger Cars	508,258
Buses	6,619
Freight Vehicles	260,846
Total	775,723

Traffic Accidents (persons) (2001)	
Fatalities	8,747
Injuries	1,180,955

Road policy in Japan – Major Objectives

Restoration of Economic Vitality through Urban Renewal and Community Cooperation

- Ensuring Increased Mobility
- Urban Renewal
- Formation of Unique Community
- Construction of Road Network Linking Different Areas of National Land
- Support for Increased Efficiency in Physical Distribution
- IT-Oriented Measures

Enhancement of Life Quality

- Restoration of Safe and Comfortable Roads
- Building Beautiful Streets

Ensuring Safe and Secure Lives

- Securing Safe Living Environment
- Precautions against Disasters
- Measures for Impending Replacement Period

Preservation and Creation of Environment

- Improvement of Roadside Environment
- Preservation of Global Environment
- Preservation and Creation of Natural Environment
- Efficient Implementation of Environmental Protection Measures

Contacts

Road Bureau, Ministry of Land, Infrastructure and Transport

2-1-3, Kasumigaseki, Chiyoda-ku, Tokyo, 100-8918, Japan

<http://www.mlit.go.jp/road/>