





## **The Swiss Federal Roads Authority**

The Swiss Federal Roads Authority was formed in 1998 following the amalgamation of the Federal Office of Road Construction and the Road Traffic section of the Federal Office of Police. It therefore unites the most important competencies and duties in the area of road traffic.

With its approximately 150 employees, the Swiss Federal Roads Authority is responsible for all matters pertaining to Switzerland's road infrastructure and road traffic. It belongs to the Federal Department of the Environment, Transport, Energy and Communications (DETEC) and combines the necessary specialised and technical know-how concerning the three most important areas of road traffic, namely:

- Road users
- Vehicles / Technology
- Infrastructure

In line with the corresponding political priorities, the Swiss Federal Roads Authority has oriented its activities towards the following objectives:

- To enhance the degree of safety on our roads for all users and vehicles
- To secure access to the road network for all users and vehicles
- To reduce the level of environmental pollution caused by road traffic
- To complete a safe, efficient and economical motorway network and preserve its substance over the long-term
- To secure the functionality of our country's motorways and their integration into the pan-European network

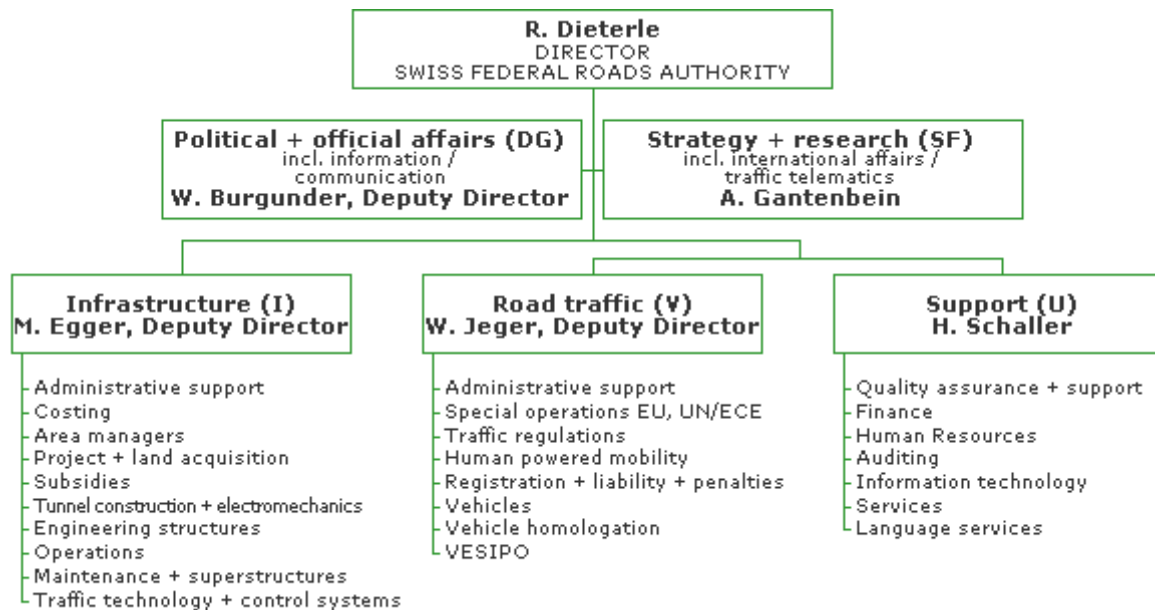
### **Swiss Federal Roads Authority (FEDRO) – Competence centre for securing sustainable mobility**

Since its formation in 1998, the Swiss Federal Roads Authority has succeeded in establishing itself as the country's authority in the areas of road infrastructure and private motorised transport. It is answerable to the Department of Environment, Transport, Energy and Communications (DETEC). It works closely together with its numerous partners at the cantonal, national and international levels in order to provide sustainable and safe mobility on our roads.

### **Organisation**

The structure and organisation of the Swiss Federal Roads Authority have been defined in line with its objectives, duties and functions. The development of modern management in the area of road administration calls for both effective organisational structures as well as flexible responses to new challenges.

## Organisation of the Swiss Federal Roads Authority



## Mobility in Switzerland 2000

### Our daily leisure travel: 300 times from the Earth to the Moon

In 2000, the population of Switzerland drove a good 265 million km every day within the country - 30% more than in 1984. Almost half the journeys (44 %) were related to leisure activities. The distance covered daily on leisure journeys is equivalent to 300 times the distance from the Earth to the Moon. These are some of the results from a survey of traffic behaviour in Switzerland carried out in 2000 by the Swiss Federal Agency for Spatial Development (ARE) and the Swiss Federal Statistical Office (SFSO). The study also shows that people are very satisfied with the standard of expansion of the road network and a high degree of acceptance of the promotion of public transport, and it points to urban, leisure and slow traffic as topics for a future-oriented transport policy.

## Collaboration with cantonal partners

### Cantonal civil engineering departments

The Swiss Federal Roads Authority works closely together with cantonal civil engineering departments for the construction, operation and maintenance of Switzerland's motorways. Here the Infrastructure division is responsible for coordinating a variety of important functions.

## Links

Under the following links, you will find a broad range of quantitative data on the Swiss national road network (funding, progress of roadworks, openings, road lengths, traffic figures) and the addresses of the cantonal partners (civil

engineering offices, road traffic offices / vehicle inspection centres, police patrol units) of FEDRO, the Swiss Federal Roads Authority.

[www.swissroads.ch](http://www.swissroads.ch)

[www.bk.admin.ch/ch/d/schweiz/kantone/index.html](http://www.bk.admin.ch/ch/d/schweiz/kantone/index.html)

[www.bfs.admin.ch](http://www.bfs.admin.ch)

[www.uvek.admin.ch](http://www.uvek.admin.ch)

[www.asa.ch](http://www.asa.ch)



ASTRAENG.PDF  
(912 KB)



ASTRAFRA.PDF  
(898 KB)



## Contacts

Swiss Federal Roads Authority (FEDRO)  
Federal Department of Environment, Transport,  
Energy and Communications  
3003 Berne  
Switzerland

Phone +41 (0)31 322 94 11

Fax +41 (0)31 323 23 03

E-mail: [info@astra.admin.ch](mailto:info@astra.admin.ch)

Website: [www.astra.admin.ch](http://www.astra.admin.ch)